



GLOBAL SWITCH

Paris



IN A FAST MOVING AND EVER
CHANGING WORLD, WHEN YOU
NEED TO MINIMISE YOUR RISK AND
MAXIMISE YOUR BUSINESS AGILITY,
GLOBAL SWITCH IS YOUR PREMIER
DATA CENTRE PARTNER.

Global Switch is the leading carrier neutral wholesale multi-tenanted data centre owner and operator across Europe and Asia-Pacific. Established in 1998 we have enjoyed an unrivalled track record in delivering best in class solutions for our customers.

All Global Switch data centre campuses are located in key international business and connectivity hubs and operate to Tier III plus standard. We offer Private Suites,

Cages and Meet Me Rooms to a broad range of customers from global systems integrators and telecommunications companies to enterprises, financial institutions and government organisations.

The launch of the extension of our world class Paris campus, driven by customer demand, has increased our global portfolio to around 290,000 sq m (3,000,000 sq ft) of state-of-the-art data centre space.

OUR CONTINUED INVESTMENT INTO OUR PARIS CAMPUS ENSURES WE ARE AT THE FOREFRONT OF INNOVATION IN OUR OPERATIONAL MANAGEMENT SYSTEMS AND THE RESILIENCE OF OUR INFRASTRUCTURE.

Welcome to our world class Paris campus.

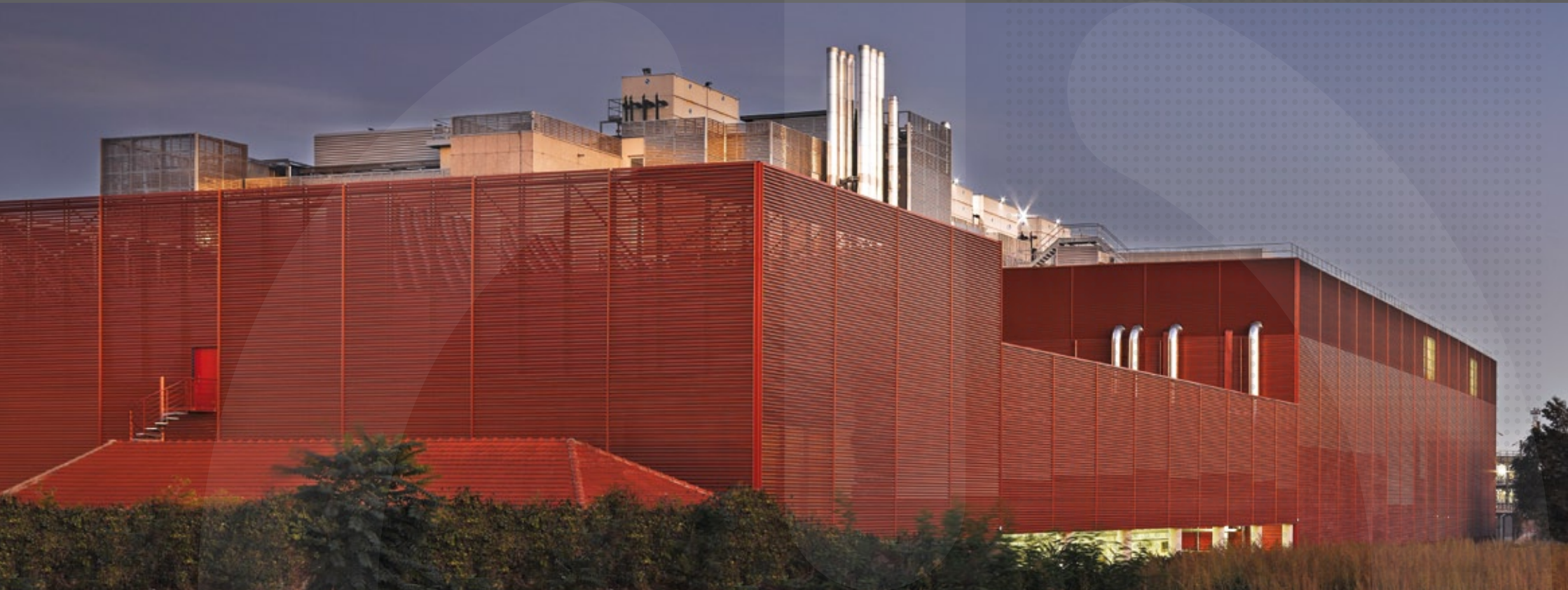
France is a founding member of the G7 and has one of the strongest economies in Europe. It also benefits from the highest proportion of non-fossil fuel power generation in Europe. As the business and administrative hub of France, Paris is an attractive data centre destination for both national and global businesses.

Understanding our customers' business needs and data centre requirements ensures that the entire Paris campus delivers world class infrastructure with best-in-class operational and environmental management.

The campus has been designed and built for maximum security and resiliency. Unrivalled security systems and robust processes are in place to protect customers' equipment and infrastructure.

The campus benefits from 48 MW of diverse power from two separate incoming supplies, offering between 1,000 watts and 3,000 watts per sq m as standard, with bespoke higher densities solutions also available.

With the completion of our Paris campus extension, we will have our ISO management systems in place for the entire campus by Q4 2011 and will have accreditation to ISO 9001, ISO 14001 and ISO 27001 early 2012.



FROM THE MOMENT YOU ENTER THE DATA CENTRE CAMPUS, THROUGH TO THE STATE-OF-THE-ART TECHNICAL AREAS, THE EXPERIENCE CAN BE DESCRIBED AS SIMPLY 'WORLD CLASS'.

Key Features

- 48 MW of diverse power from two separate incoming supplies
- Optional static UPS or N+2 no-break diesel rotary UPS protection to critical services
- Carrier Neutral
- Access to multiple Tier 1 international carrier networks
- Flexible cooling with variable speed pumps
- Air cooled chillers
- Dedicated security infrastructure system
- HD video surveillance system and biometric entry controls
- Low risk operational environment



As the owner and operator of our Paris campus, reputation is everything. Our ongoing commitment to respond to our customers changing needs is vital.

Our operational environment enables customers to reduce their carbon footprint and

drive greater efficiency from their operations. This reduces total cost of occupancy and minimises operational risk which is why some of the world's largest companies and organisations have chosen our Paris campus to house their mission-critical IT infrastructure.

WE TAKE OUR CORPORATE SOCIAL RESPONSIBILITY SERIOUSLY AND ARE COMMITTED TO REDUCING THE IMPACT OF OUR DATA CENTRES ON THE ENVIRONMENT.



Air cooled chillers.



Variable speed pumps.



Exhaust silencers for diesel engines.

In order to drive greater efficiencies for our customers we continually look to reduce CO₂ emissions and our carbon footprint.

Our Paris campus offers:

- Reconfigurable power and cooling distribution
- Variable speed fans and fresh air cooling systems
- Low energy CRAC units designed with fans located in the floor voids, resulting in 40% less energy consumption than standard methods
- Power coming from a supplier with a low carbon footprint

The extension of our campus obtained a Bouygues Ecosite Standard, based on criteria including:

- Environmental risk
- Waste and noise management
- Water and air quality
- Biodiversity aspects
- Energy savings
- The cleanliness and tidiness of the site

In addition, the community surrounding our Paris campus will be able to draw waste heat energy output for use within the local community.



Exceeding expectation is at the heart of our business. Our international teams share their knowledge to ensure we are at the cutting edge of data centre management and service provision giving a consistent experience across the group.

We have worked with some of the world's largest companies to deliver data centre solutions to match their specific requirements for the short, medium and long term challenges they may face. Being able to offer robust and scalable solutions in terms of space, power and cooling has been the driver for many businesses choosing Global Switch as their worldwide data centre provider.

Our team has unrivalled expertise in all facets of the operational environment. These individuals are on hand to work

with all customers to ensure that their individual business needs and specifications are met. In addition, we have sourced only the most talented and experienced experts and suppliers to design, build and maintain our Paris campus.

Global Switch operates a centrally run Critical Environments Programme across all of its data centres, with dedicated teams at each campus. These teams drive a common set of "best practice" standards, systems, processes and procedures. Not only does this mean the data centre environment is operating at its most efficient levels, it gives customers a clear expectation of how their data centre will be maintained across their Global Switch portfolio as our best practices and operational procedures are intrinsic to all of our data centres.

OUR UNRIVALLED EXPERIENCE
AND EXPERTISE GIVE OUR
CUSTOMERS THE CONFIDENCE
THAT WE WILL DELIVER FROM
INITIAL CONSULTATION, THROUGH
BUILD AND FIT OUT PHASES, TO
CONTINUED TECHNICAL SUPPORT.

OUR CARRIER NEUTRAL STANCE
GIVES YOU GREATER CHOICE IN
A COMPETITIVE ENVIRONMENT.
THE ABILITY TO CONNECT INTO
MULTIPLE PEERING EXCHANGES
AND CARRIER NETWORKS RESULTS
IN DIRECT CONNECTIONS AND
LOWER LATENCY.

Global Switch data centres are located in key connectivity hubs across Europe and Asia-Pacific in close proximity to international fibre routes.

Access to multiple ISPs and Tier 1 carriers is essential to business continuity and increasing network reach. Our Paris campus is no exception, benefitting from in excess of 20 carriers, including some of the largest network providers in the world.

At Global Switch you are able to establish direct connections to a vast portfolio of service providers giving you the flexibility to diversify your network and connect your data centres as your business needs evolve.

The Global Switch Paris campus has four diverse entry points as well as four dedicated Meet Me Rooms.



WE UNDERSTAND OUR CUSTOMERS' DATA CENTRE REQUIREMENTS AND CHALLENGES. WE OFFER UNRIVALLED EXPERTISE, FLEXIBILITY AND SCALABILITY TO MEET THOSE CHALLENGES.

Our Paris campus solutions include:

Private Suites A rapidly growing number of businesses are now enjoying the benefits of outsourcing IT infrastructure and mission critical systems into Global Switch Private Suites. These self contained areas, which can include 24x7 network operating centre facilities, are designed and built to customers' bespoke specifications.

Cages Global Switch Cages offer the benefits of large scale resilience for medium sized IT space requirements. This solution provides secure private areas for customers and offers flexibility in design and layout.

Meet Me Rooms Our carrier neutral status ensures that carriers and ISPs are able to establish Points of Presence throughout our portfolio of

data centres. Our diversely routed Meet Me Rooms ensure that customers can connect directly to all major carriers and telecommunication service providers.

Our Paris campus provides a range of additional services from tailored private offices, meeting rooms and refreshment areas, to technical cleaning, cable management and secure storage.

TECHNICAL SPECIFICATION



THE EAST BUILDING

Main Structural Features

- Reinforced concrete structure with granite and stainless steel cladding
- Minimum from raised floor: 3.3m clear height to underside of deepest beam
- Typical floor loading of 10kN/m²
- Anti-static raised floor – minimum height 600mm
- 1 goods lift (10 tonnes) and 2 passenger lifts
- Flexible and partitionable IT space

Redundant Power

- 24 MW total power capacity through dedicated circuits
- Diverse A&B power supply distributed via high voltage circuits
- Offering between 800 watts and 1,500 watts per sq m as standard
- High density areas available

- Minimum N+N redundancy on power supply to critical services and mechanical load
- Minimum N+1 for diesel generators
- On-site diesel tanks (220,000 litres) support 60 hours at full capacity, with fuel delivery within 24 hours

Cooling and Environment

- Minimum N+1 redundancy on water cooling system
- Temperature and humidity in technical space to highest industry standards and maintained within energy efficient parameters
- Cooling towers installed at roof level

THE WEST BUILDING

Main Structural Features

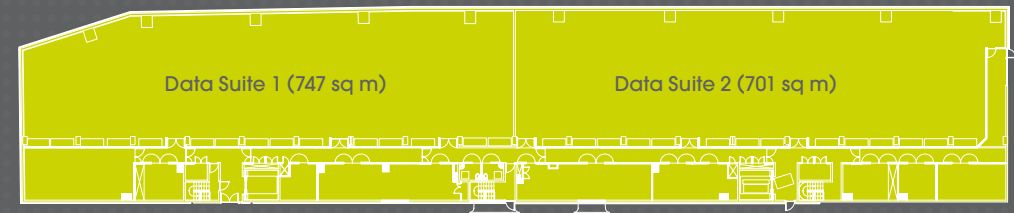
- Reinforced concrete structure and shell with an aluminium external cladding
- Minimum from raised floor: 3m clear height to underside of deepest beam

- Typical floor loading of 10kN/m²
- Anti-static raised floor – minimum height 800mm
- 2 goods/passenger lifts (2 x 4.5 tonnes)
- Flexible and partitionable IT space
- Free cooling chiller units

Redundant Power

- 24 MW total power capacity through dedicated circuits
- Diverse A&B power supply distributed via high voltage circuits
- Offering between 1,500 watts and 3,000 watts per sq m as standard
- High density areas available
- Minimum N+2 no-break diesel rotary UPS protection to critical services
- Minimum N+1 generators for mechanical load back up
- On-site diesel tanks (160,000 litres) support 48 hours at full capacity, with fuel delivery within 24 hours

The West Building: Typical upper floorplate



Cooling and Environment

- Minimum N+1 redundancy on cooling system
- Temperature and humidity in technical space to highest industry standards and maintained within energy efficient parameters
- Free cooling chiller units

THE PARIS CAMPUS

Fire Detection and Suppression

- Analogue addressable fire detection system (smoke and heat)
- VESDA early warning system
- Gas suppression system using centrally stored Inergen to technical and selected Global Switch areas
- Smoke and gas extraction
- APSAD conformity (R4-R7-R13)

Building Management Systems

- Dedicated 24x7 facilities management team on-site
- Critical systems real time monitoring to ensure stability of the environment through BMS system

Connectivity

- Carrier Neutral
- Multiple Tier 1 carriers
- Structured cabling
- 4 diverse entry points
- 4 Meet Me Rooms
- Roof space availability for satellite and antennae equipment

Security

- On-site specialist security 24x7
- Integrated access control system
- High Definition CCTV (interior & exterior) digital recording
- 4 secure interlock entry points

- Perimeter intrusion detection system
- Secure managed delivery and loading area
- Secure car park

Ancillary Services

- Tailored private office areas to customer specification
- Design and build services
- Installation and cabling
- Meeting rooms
- On-site secure storage for deliveries
- Technical cleaning
- Refreshment zone

LEADING THE WAY FOR THE
DATA CENTRE INDUSTRY, GLOBAL
SWITCH IS THE ONLY CHOICE
FOR RESILIENCE, INNOVATION,
SCALABILITY AND AGILITY.

WE LOOK FORWARD TO
WELCOMING YOU TO OUR
WORLD CLASS PARIS CAMPUS AND
BECOMING YOUR WORLDWIDE
DATA CENTRE PARTNER.

Paris

7-9 rue Petit, 92582 Clichy Cedex, France
+33 (0)1 55 90 04 60
salesparis@globalswitch.com



This brochure has been printed on Vision Superior which has FSC certification, is bleached using an Elementary Chlorine Free process and is produced at a mill in the UK that is certified to the ISO 14001 environmental management standard. The inks used in the printing process are vegetable based and totally recyclable. Printed in the UK by an FSC, ISO and Carbon Neutral printing company. © Global Switch 2011.

The information provided in this brochure is intended to be used for illustrative purposes only and does not constitute part of any offer or offer to contract. This brochure is given with no knowledge of your needs or requirements, and any information herein contained is not warranted as accurate or complete. Global Switch Limited and its group companies accept no liability arising due to your reliance upon the contents of this brochure. © Global Switch 2011

GLOBAL SWITCH IS OWNED BY  REUBEN BROTHERS

Corporate Office +44 (0)20 7802 5150
info@globalswitch.com

Data Centres

Amsterdam +31 (0) 20 6666 300
salesamsterdam@globalswitch.com

Frankfurt +49 (0)69 74 22 70
salesfrankfurt@globalswitch.com

London +44 (0)20 7473 9000
saleslondon@globalswitch.com

Madrid +34 91 312 06 00
salesmadrid@globalswitch.com

Paris +33 (0)1 55 90 04 60
salesparis@globalswitch.com

Singapore +65 6858 5008
salessingapore@globalswitch.com

Sydney +61 (0) 2 9566 7000
salessydney@globalswitch.com

**GLOBAL
SWITCH**

GLOBAL SWITCH