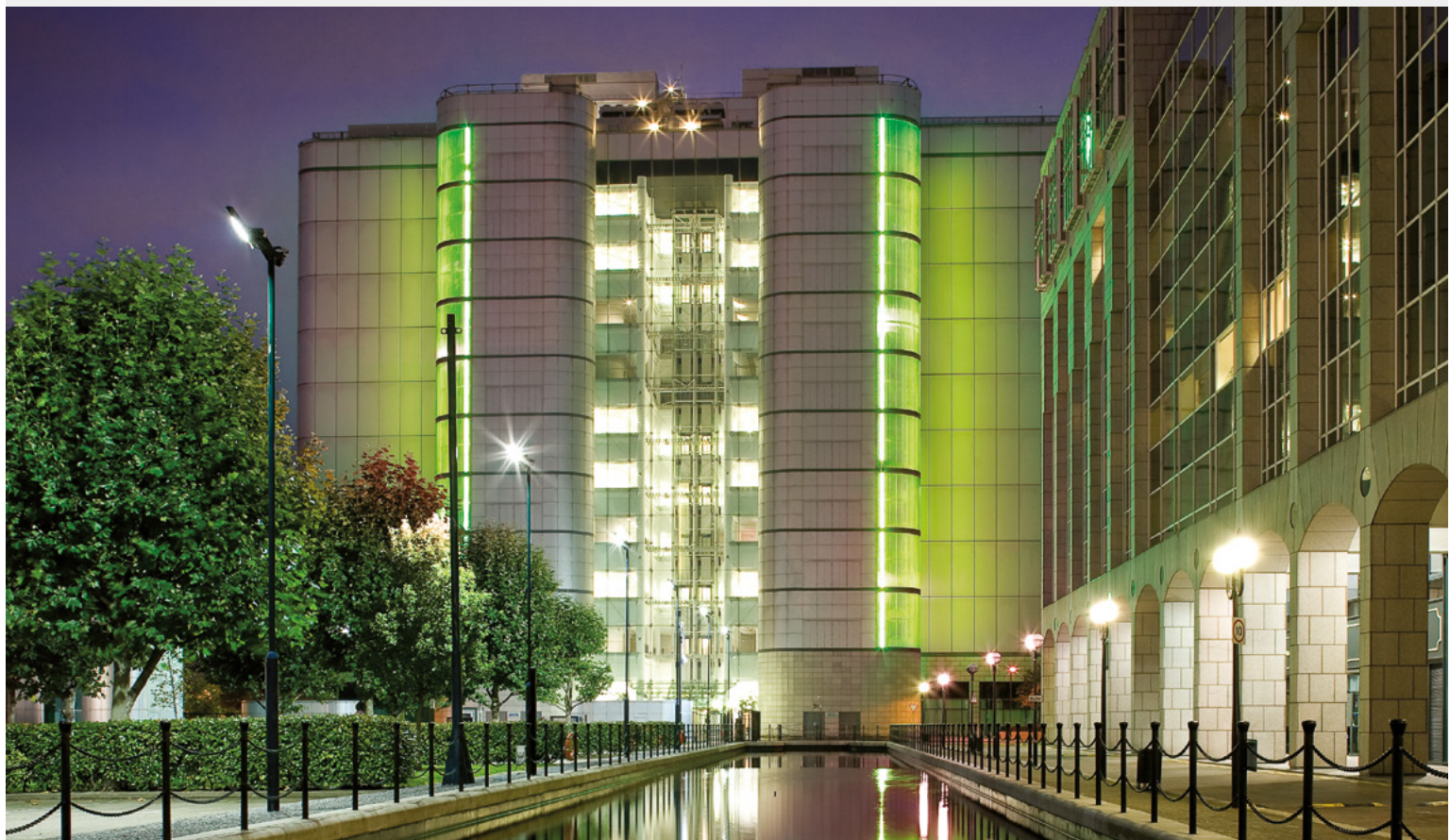


# EUROPE'S LARGEST PURPOSE BUILT DATA CENTRE PROVIDING UNRIVALLED RESILIENCE

London East Technical Specification



UNINTERRUPTED  
POWER



BESPOKE  
SOLUTIONS



NETWORK  
DENSE



CLOUD  
CONNECTIVITY

# GLOBAL SWITCH

Global Switch is a leading owner, operator and developer of large-scale, multi-customer, carrier neutral data centres across Europe and Asia-Pacific. Our data centres provide a rich carrier and cloud-neutral ecosystem and offer the reliability, security and flexibility that our customers require to house their IT infrastructure.

## Services

### Private Suites

These self-contained areas, which can include 24x7x365 network operating centre facilities, are designed and built to customers bespoke specifications.

### Cages

The Global Switch cage solution offers the benefits of large-scale resilience for medium sized IT space and power requirements. This solution provides secure private areas for customers and offers flexibility in design and layout.

### Racks

Racks situated in colocation areas are a vital resource for businesses looking to outsource critical IT infrastructure, establish a presence in multiple strategic locations, or those wishing to increase their footprint as their space requirements grow.

### Meet Me Rooms

Meet Me Rooms offer telecommunications companies highly secure purpose built areas to house their network infrastructure in order to connect with a host of companies and organisations within the data centres.

## Key benefits

**Scale:** Scalability with over 3,650,000 sq ft (340,000 sq m) across eleven world class, fully-fitted data centres.

**Flexibility:** Access to the full range of space and power solutions with flexibility to meet your needs.

**Network dense:** Data centres that are located adjacent to central business districts exclusively in Tier 1 markets offer connectivity rich, low latency solutions with direct access to the major international fibre routes.

**Competitive options:** A strong diverse service provider ecosystem ensures that customers have access to competitive pricing for a complete range of services.

**Resilient Infrastructure:** Global Switch provides uninterrupted power with multiple layers of redundancy, optimised cooling and security. Monitoring of these key components through highly sophisticated building management systems is backed up by 24x7x365 security and technical support teams.

**Bespoke solutions:** Solutions can be tailored to individual customer requirements.

**Environmental commitment:** Energy efficiency is at the core of our business. Through innovation in design, operation and working closely with our customers, we are continually improving the energy efficiency of our data centres.

**Operational excellence:** Key ISO certifications complement a robust Critical Environments Programme which is central to applying and maintaining best in class practices across our global data centre portfolio.

**Financial strength:** A financially secure owner and operator with investment grade credit ratings.



**WORLD-CLASS  
DATA CENTRES**



**OPTIMISED  
COOLING**



**CARRIER  
NEUTRAL**



**HIGHLY  
SECURE**

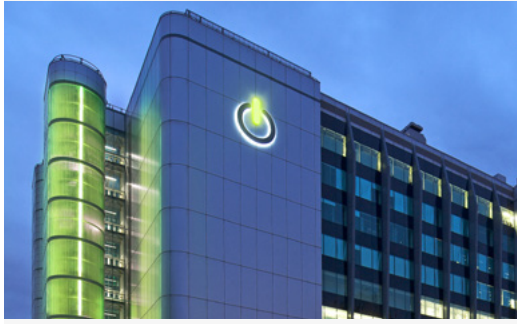


**ENVIRONMENTAL  
COMMITMENT**



**OPERATIONAL  
EXCELLENCE**

# LONDON EAST



## Location

- The data centre is located 0.5 miles from the financial district and 3.5 miles from the city centre
- A local railway station is located within a 5 minute walk
- London City Airport is 3.5 miles away and 3 further airports are within driving distance

## Building Overview

- Global Switch owns the freehold
- Purpose built
- Exceeds Tier III operational performance
- 65,542 sq m of gross space
- 11 data floors
- Flexible IT space with ability to create bespoke environments as required

## Main Structural Features

- Steel frame with concrete floors, metal faced cladding and glazing
- 5m slab to slab height
- Raised floor height of 600mm
- Minimum from raised floor: 3.6m clear height to underside of deepest beam
- Floor loading of 10kN/m<sup>2</sup>
- 1 goods lift (7.5 tonnes), 2 passenger lifts

## Power

- 132kV utility supply with N+N redundancy
- Utility power supply capacity of 46MVA (current)
- Technical (IT) power and mechanical systems supplied by on-site Diesel Rotary UPS with N+2 redundancy
- Fully diverse power distribution to technical areas
- On-site fuel storage to support 48 hours at full capacity with 24x7x365 fuel delivery
- Offering 2,000 W/m<sup>2</sup> as standard, with higher power density solutions fully supported

## Cooling

- 41.57MW of installed cooling provision
- Minimum N+2 resilience on all systems
- CRAH units control temperature and humidity in technical space within the recommended range of ASHRAE TC9.9
- Diverse distribution pipework throughout
- Chilled water cooling system
- In rack cooling capability if required

## Security

- Operations Centre manned 24x7x365
- Security guard patrols 24x7x365
- Continuous CCTV surveillance of external and internal areas
- CCTV records kept for 31 days
- Comprehensive intruder detection and alarms to all areas
- Perimeter Intrusion Detection System (PIDs)
- Strict access control procedures to ISO 27001
- Access control using proximity card readers
- Physical access via mantrap
- Secure managed delivery and loading area available 24x7x365

## Connectivity

- Carrier Neutral
- Network dense with access to multiple global and regional carriers and Internet service providers offering Dark Fibre, Wavelength, Ethernet, MPLS, VPLS, IP Transit, Peering, CDN, Storage, Virtualised Services (SDN), Voice and Mobile Services
- Access to multiple cloud services through leading public, private and hybrid cloud solution providers
- 2 dedicated Meet Me Rooms
- 6 diverse building entry points
- Diverse cable routes and pathways
- Campus fibre system interconnecting London East and London North
- Roof space availability for satellite and antennae equipment
- Multiple LINX Fibre/Capacity Partners and remote peering service providers

## Fire Detection and Suppression

- Analogue addressable fire detection system in all areas
- Aspirated early warning smoke detection system (monitored 24x7x365)
- Inergen gas suppression system in technical areas

## Critical Environments Management

- Experienced 24x7x365 facilities management team
- Environment (thermal conditions) monitored 24x7x365
- All Building Management Systems (BMS) monitored 24x7x365
- Comprehensive energy metering systems
- Internationally recognised critical environments programme

## Other Services

- Cross connects
- Customer reports
- Deliveries and storage
- Design and build
- Fit-out
- On-site facilities
- Remote hands
- Technical cleaning and waste disposal

## Certifications

- ISO 9001, 14001, 27001
- OHSAS 18001
- Membership of the United Kingdom Climate Change Agreement (CCA)

## Global Switch London East

Global Switch House  
3 Nutmeg Lane  
London E14 2AX, United Kingdom  
+44 20 7473 9000  
saleslondon@globalswitch.com

## Corporate Office

4th Floor, Millbank Tower  
21-24 Millbank  
London SW1P 4QP  
United Kingdom  
+44 20 7802 5150  
info@globalswitch.com

## Data Centres

### Amsterdam

Johan Huizingalaan 759  
1066 VH Amsterdam  
Netherlands  
+31 20 6666 300  
salesamsterdam@globalswitch.com

### London Campus

**London East**  
Global Switch House  
3 Nutmeg Lane  
London E14 2AX  
United Kingdom  
+44 20 7473 9000  
saleslondon@globalswitch.com

**London North**  
East India Dock House  
240 East India Dock Road  
London E14 9YY  
United Kingdom

+44 20 7473 9000  
saleslondon@globalswitch.com

### Frankfurt Campus

**Frankfurt North / Frankfurt South**  
Eschborner Landstraße 110  
60489 Frankfurt am Main  
Germany  
+49 69 74 22 70  
salesfrankfurt@globalswitch.com

### Madrid

Calle Yécora, 4  
28022 Madrid  
Spain  
+34 91 312 06 00  
salesmadrid@globalswitch.com

### Paris Campus

**Paris East / Paris West**  
7-9 rue Petit  
92582 Clichy Cedex, France  
+33 1 55 90 04 60  
salesparis@globalswitch.com

### Hong Kong

18 Chun Yat Street  
Tseung Kwan O Industrial Estate  
New Territories, Hong Kong  
+852 3955 1000  
saleshongkong@globalswitch.com

### Singapore

**Singapore Tai Seng**  
2 Tai Seng Avenue  
Singapore 534408  
  
**Singapore Woodlands**  
Woodlands Avenue 12  
Singapore 738990  
+65 6858 5008  
salessingapore@globalswitch.com

### Sydney Campus

**Sydney East / Sydney West**  
400 Harris Street  
Ultimo, Sydney  
NSW 2007 Australia  
+61 2 9566 7000  
salessydney@globalswitch.com

**ALWAYS ON** GLOBALSWITCH.COM

The information provided in this brochure is intended to be used for illustrative purposes only and does not constitute part of any offer or offer to contract. Any information herein contained is not warranted as accurate or complete. © Global Switch 2018.